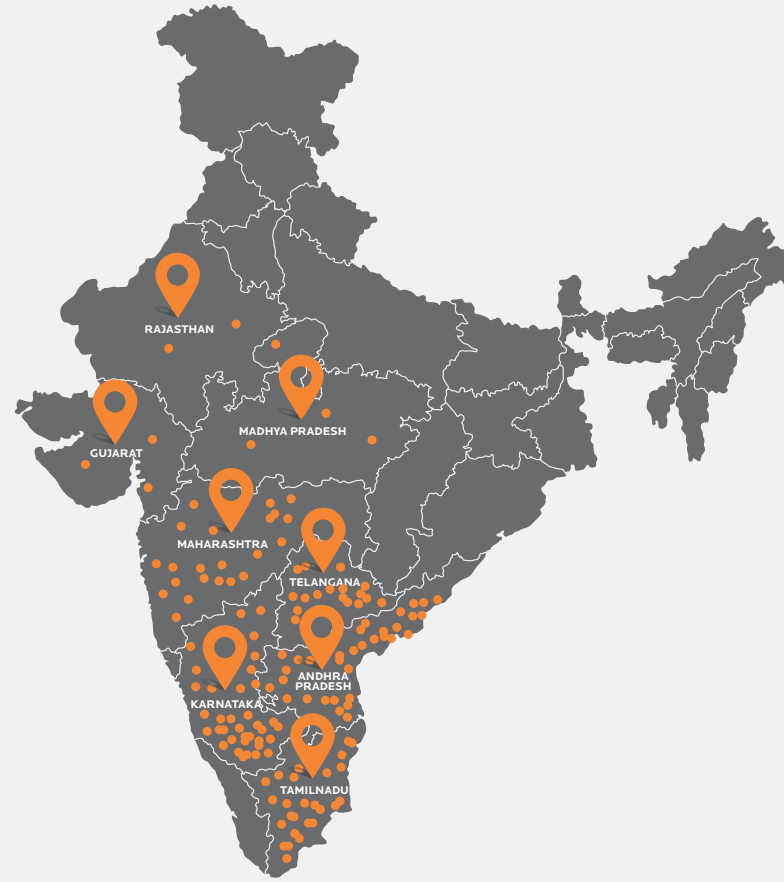


## Ensuring safer stay and faster delivery

- Dedicated multiple loading points for faster loading
- Exclusive 2 weigh bridges for quick movement of goods
- Wide parking facility available for more than 300 trucks
- Geographically well located factory to cater to all the needs of southern states

## Our Network



## Approvals and compliance

### IS2830 - ISI

Carbon steel cast billet for rerolling into steel for general structural purposes.

### IS10748 - ISI

Hot rolled steel strip for welded tubes and pipes.

### IS1161 - ISI

ERW steel tubes for structural purposes.

### IS3601 - ISI

Steel tubes for mechanical and general engineering purposes.

### IS4923 - ISI

Hollow steel sections for structural application.

### IS1239 (1) - ISI

Steel tubes, tubular and other wrought steel fittings.

## Quality

### Destructive Testing

- Bend test up to 50 NB
- Flattening test above 50 NB
- Drift expansion test
- Crushing test

### Non-Destructive Testing

- Hydro testing
- Dimension measurements in the mill as per the Scheme of Testing and Inspection (STI)

### Laboratory testing

- Chemical test
- Tensile test
- Hardness test



**MS VAYU**<sup>®</sup>  
STEEL PIPES

*Aap Ke Saath Hamesha*

### MARUTI ISPAT & PIPES PRIVATE LIMITED

5-4-83, 2<sup>nd</sup> Floor, Rama Towers, TSK Chambers, MG Road, Secunderabad - 500 003 Telangana

Factory: 167 Madhavaram Village, Mantralayam Mandal, Kurnool - 518 349 Andhra Pradesh

M: +91 90000 12989 | [www.msvayu.com](http://www.msvayu.com)

**MS VAYU**<sup>®</sup>  
STEEL PIPES  
*Aap Ke Saath Hamesha*

THE  
**STRENGTH**  
OF INDIA



**MS VAYU's** premium engineered steel pipes and tubes are produced by Maruti Ispat and Pipes Pvt. Ltd. (MIPPL), adopting the highest professional standards and modern technology at the state-of-the-art, fully integrated steel plant spread across more than 300 acres with a production capacity of 1.43 lakh MT per annum. MS VAYU's premium engineered steel pipes and tubes are hallmarks of strength, safety and durability. These products are the result of years of market understanding and incessant research. Due to ease of usage and installation, these products can be used in a wide range of industries including construction, bus-body building, scaffolding, agriculture, steel furniture and more.



#### VISION

To diversify and build a profitable business known for excellence, creating value for all stakeholders and a workplace of choice for employees.



#### MISSION

MIPPL strives to deliver superior value to stakeholders through cutting-edge technology and higher productivity, consistent with modern management practices.



#### VALUES

- Client Value Creation
- Respecting Individual
- Integrity
- Empowerment
- Innovation

## Our Priority

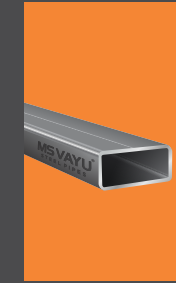
Guided by a philosophy to produce safe and sustainable steel, we have pioneered in quality TMT steel bars and steel products, operating with cutting-edge technology in order to meet the stringent requirements of our reputed customers.

At MIPPL, we pay attention not only to the quantity of the product, but also to the quality. Since our inception, we have developed a significant production capacity for iron and steel production. Today our production capacity has reached 180,000 MT for Sponge Iron Production, 150,000 MT for Steel Melting Shop, 8 MW Energy production from Power Plant and 143,000 MT for Pipe & Tube production.



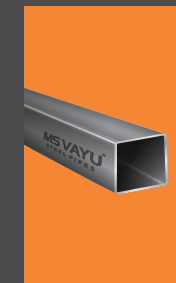
## Our Product Range

**RECTANGULAR HOLLOW SECTION PIPES:** Manufactured using the finest quality of steel, rectangular pipes are extensively used in welded steel frames which experience loads from multiple directions. The shapes of pipes suit multiple-axis loading with uniform geometry along with two or more cross-section axes. This enhances the uniform strength of these pipes, making them a better choice for columns.



These are manufactured through the process, where flat steel plate is slowly changed in shape to achieve a round, where the edges are presented to weld. Then, the edges are welded together to form the master tube. This master tube, which is also referred as the mother tube goes through a sequence of shaping stands, which form the final square or rectangular shape.

**SQUARE HOLLOW SECTION PIPES:** Manufactured using the finest quality of steel, square pipes are extensively used in welded steel frames that experience loads from multiple directions. The shapes of pipes suit multiple-axis loading with uniform geometry along with two or more cross-section axes. This enhances the uniform strength of these pipes, making them a better choice for columns.



These are manufactured through the process, where a flat steel plate is slowly changed in shape to achieve a round, where the edges are presented to weld. Then, the edges are welded together to form the master tube. This master tube, which is also referred as the mother tube goes through a sequence of shaping stands, which form the final square or rectangular shape.

#### ERW STEEL PIPES IS:4923

SQUARE HOLLOW SECTIONS (SHS)									
S.No.	SQUARE SIZE	ACTUAL OD in mm	Thickness						
			1.2 mm	1.6 mm	2.0 mm	2.5 mm	3.0 mm	3.5 mm	4.0 mm
1	19X19	25.47	4.3	5.3	6.9	8.5	10.0		
2	25X25	31.84	5.4	6.7	8.8	10.9	12.8		
3	30X30	38.21	6.6	8.1	10.7	13.2	15.6	18.0	
4	38X38	48.4	8.4	10.4	13.7	17.0	20.2	23.3	26.3
5	50X50	63.69	11.1	13.8	18.3	22.6	26.9	31.2	35.3
6	60X60	76.43		16.6	22.0	27.3	32.6	37.8	42.9
7	72X72	91.71			26.5	33.0	39.4	45.7	51.9

#### ERW STEEL PIPES IS:4923

RECTANGULAR HOLLOW SECTIONS (RHS)									
S.No.	RECTANGULAR SIZE	ACTUAL OD in mm	Thickness						
			1.2 mm	1.6 mm	2.0 mm	2.5 mm	3.0 mm	3.5 mm	4.0 mm
1	40X20	38.21	6.6	8.1	10.7	13.2	15.6		
2	40X25	41.4	7.1	8.9	11.7	14.4	17.0	19.6	
3	50X25	47.77	8.3	10.3	13.5	16.7	19.9	22.9	25.9
4	60X40	63.69	11.1	13.8	18.3	22.6	26.9	31.2	35.3
5	75X25	63.69	11.1	13.8	18.3	22.6	26.9	31.2	35.3
6	80X40	76.43	13.2	16.6	22.0	27.3	32.6	37.8	42.9
7	95X25	88.9	13.2	17.6	21.9	27.4	32.9	38.4	43.9
8	96X48	91.71		21.1	26.5	33.0	39.4	45.7	51.9

Indicates Presently Rolled Sections

**ROUND MS BLACK PIPES:** MS Black Pipes or Mild Steel Black Pipes are so called because they are not galvanized and are ideal to be welded into pipes, tubes and other kinds of tubing. It is one of the economy metals available in the market and can last up to 100 years if placed in a well-maintained environment. The high-quality steel used to manufacture black pipes makes them one of the most used ones in the construction and general engineering industries today.



#### ERW STEEL PIPES IS: 1161, IS: 3601, IS: 1239 (Part 1)

ROUND TUBE									
S.No.	NB & Inch	Tube (OD) in mm	Thickness in mm						
			1.2	1.6	2.0	2.5	3.0	3.5	4.0
Weight KG/6.0 Meter Pipe									
1	15mm (1/2")	21.3	3.6	4.4	5.7				
2	20mm (3/4")	26.9	4.6	5.6	7.4	9.0			
3	25mm (1")	33.7	5.8	7.1	9.4	11.5	13.6		
4	32mm (1.25")	42.2	7.3	9.0	11.9	14.7	17.4	20.0	22.6
5	40mm (1.5")	48.3	8.4	10.4	13.7	16.9	20.1	23.2	26.2
6	50mm (2")	60.3	10.5	13.1	17.3	21.4	25.4	29.4	33.3
7	65mm (2.5")	76.2	13.3	16.6	22.0	27.3	32.5	37.6	42.7
8	80mm (3")	88.9		19.4	25.7	32.0	38.1	44.2	50.2

## Advantages of MS VAYU Pipes

MS VAYU steel pipes and tubes come with a host of benefits that give a distinct edge over other products.



**No end burrs**  
The smooth edges prevent injuries



**Collaborative German technology**  
German cold saw usage for better finish



**Straightness of tubes**  
The perfection in dimensions is a boon for end user



**BIS Standards**

- 100 BIS compliance
- Product with quality and strength
- Fully dimensional accurate pipes and tubes



**Rust-free surface finish**  
Using the descaler to clean the surface scale during manufacturing process for great quality



**Stringent quality control**  
Advanced QC lab is well equipped to ensure that the products pass through the stringent norms before dispatch



**User friendly, low carbon steel**  
Helps in fabrication due to its consistent yield strength and malleability



**Testing Accuracy**  
Japanese spectrometer technology is used for accurate testing of raw material and finished product